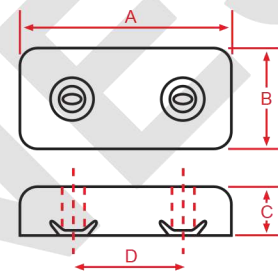


# ANODE

## Zinc Anode

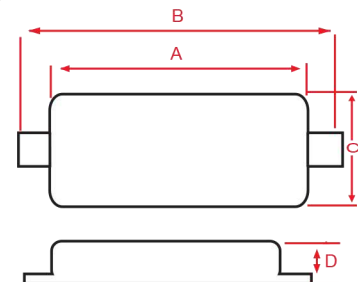
### Type B (Bolted Type)

Type	Dimension AxBxCxD	Weight (kg)
B2	150x75x25x75	1.5
B3	200x100x20x110	2.5
B4	200x100x30x110	3.6
B5/B6	300x150x20x160	5.9
B8	300x150x25x160	7.3
B9	300x150x30x160	8.3

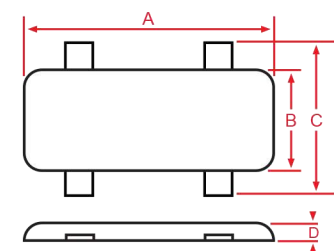


### Type S (Welded Type)

Type	Dimension AxBxCxD	Weight (kg)
S2	238x150x75x25	1.7
S3	350x200x100x20	3.0
S4	350x200x100x30	4.2
S4E	350x200x100x40	6.3

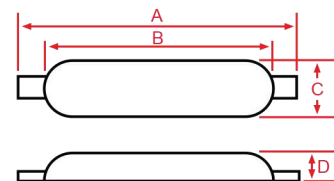


Type	Dimension AxBxCxD	Weight (kg)
S6	300x150x270x20	6.5
S8	300x150x270x25	8.0
S9	300x150x270x30	9.5
S9E	300x150x270x40	12.0
S9F	300x150x270x50	14.6



## Aluminium Anode

Type	Dimension AxBxCxD	Weight (kg)
W 130	350x270x150x30	3.2
W 111	530x395x150x30	5.2
W 114	650x550x127x50	9.8
W 117	650x550x130x65	11.6
W 119	650x550x130x75	14.1



Disclaimer : Dimensi dan berat diatas adalah ilustrasi, deviasi + / - 5% bisa terjadi pada produk akhir.